

Calibration of Radiocarbon Age to Calendar Years

(High Probability Density Range Method (HPD): INTCAL13)

(Variables: $\delta^{13}\text{C} = -25.4$ o/oo)

Laboratory number **Beta-503629**

Conventional radiocarbon age **2490 \pm 30 BP**

95.4% probability

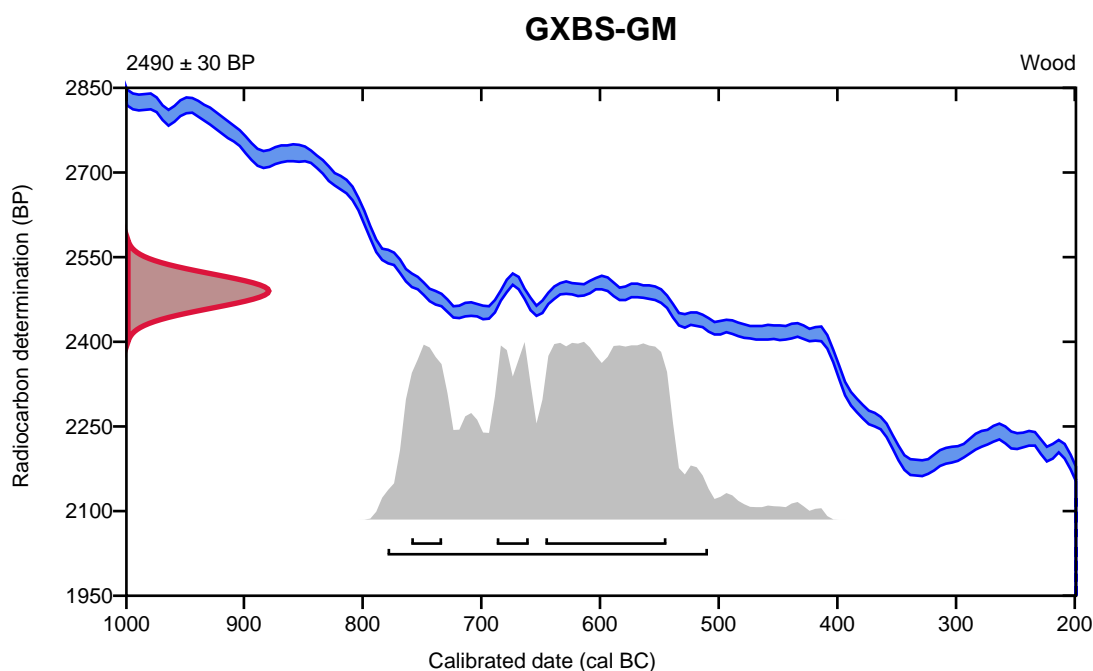
(95.4%) 781 - 511 cal BC (2730 - 2460 cal BP)

68.2% probability

(45.9%) 648 - 546 cal BC (2597 - 2495 cal BP)

(11.4%) 761 - 735 cal BC (2710 - 2684 cal BP)

(10.9%) 689 - 662 cal BC (2638 - 2611 cal BP)



Database used
INTCAL13

References

References to Probability Method

Bronk Ramsey, C. (2009). Bayesian analysis of radiocarbon dates. Radiocarbon, 51(1), 337-360.

References to Database INTCAL13

Reimer, et.al., 2013, Radiocarbon55(4).